

Orchestrating a brighter world

NEC

Professional Installation Projectors

P Series

P502WL-2 | P502HL-2



Powerful installation projectors with laser-phosphor light source supports new, demanding projection applications.

Laser Light Module

- 20,000-plus hours of virtually maintenance-free operation
- High-brightness, lower power consumption enhances applications such as retail, digital signage and theme parks
- Ability to control brightness creating a stable image over longer time periods

Integrated and Powerful

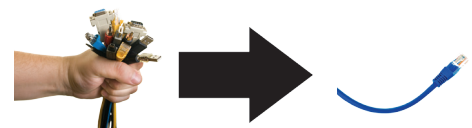
- Project uncompressed FHD video with integrated HDBaseT
- High performance video processing/scaling creates life-like images
- Integrated software applications such as Crestron Roomview, AMX Beacon and PJ Link allow for complete interactivity and control

Flexible

- Tilt-free installation capabilities make these projector ideal for almost any install environment, including portrait orientation
- Lens shift capabilities make alignment easy: P502WL-2 (+59 vertical, +/- 28% horizontal), P502HL-2 (+62 vertical, +/- 25% horizontal)

Built-In HDBaseT Support

Simplify your installations with HDBaseT. Optimized for video applications and supporting uncompressed full HD digital video, audio, ethernet, power and various control signals. With only a single cable (up to 100m) to run, infrastructure and labor costs are reduced, installations are significantly easier, and there is no cable clutter to manage. With uncompressed HD video support, images have never been more stunning. What's more, control signals are contained in the same cable.



MultiPresenter

MultiPresenter is application software that lets you display your device's screen (PC, tablet, smart phone, etc.) on the receiver projectors via wired or wireless LAN. MultiPresenter is free and available on Windows, Mac, iOS, and Android. MultiPresenter can send images from your various devices, which enables you to display real-time images with the internal camera or web pages on the smart devices in combination with a file sharing application.

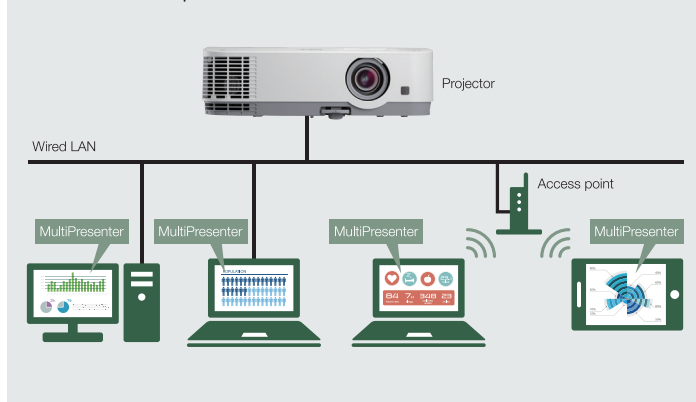


Desktop Version (Win/Mac)

Computer audio and video data (audio can be transmitted only when using Windows) can be transmitted via a wireless or wired LAN.

- **Easy Connection**
Input a 4-digit number (PIN code) for a network connection via wireless LAN.
- **Multiple devices (maximum of 16 screens)** can display at the same time and simultaneously display onto multiple receiving projectors.
- **Projector control**

Connection Example

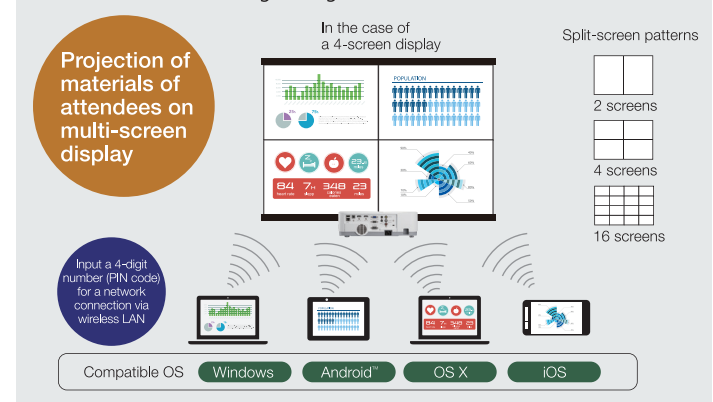


Mobile Version (Android/iOS)

You can transmit files, photos, camera images, files of web pages, and other information stored on Android or iOS devices via a wireless LAN.

- **Easy Connection**
Input a 4-digit number (PIN code) for a network connection via wireless LAN.
- **Multiple devices (maximum of 16 screens)** can display at the same time and simultaneously display onto multiple receiving projectors.
- **Projector control**

Wireless connection image using wireless LAN module



Advanced Networking Capabilities

- Integrated RJ45 connection for quick connection to the LAN (10/100 base-T capability)
- Control and receive important broadcast messages via Crestron Roomview™
- MultiPresenter enables up to 16 wireless devices to be connected to the projector simultaneously with access controlled by the moderator.
- Remote diagnostics enable the user to monitor and make adjustments to the projector remotely
- Simple Access Point Sending photos and documents have never been easier from a computer or iPad.

Advanced Software Features

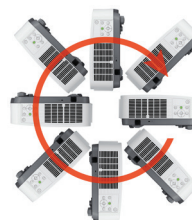
Full HD 3D video (144Hz)

When combined with active shutter glasses and 3D emitter, the P Series Projectors create 3D images from a computer or Blu-ray player. The projectors utilize the 3D sync line output to connect to the 3D emitter. Optional 3D glasses and emitters by XPAND are available from NEC (X105-RF-X2 / AD025-RF-X1)



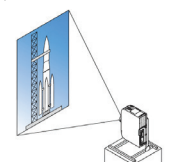
Tilt-free

The projector can be rotated freely (360°) to orient the image depending on the installation requirements



Portrait mode

Allows the projector to be rotated (and screen if necessary) to a vertical alignment so that portrait content can be viewed without black bars on the side when landscape mode is used.



UNIQUE FEATURES

Advanced AccuBlend™ ensures detailed images when non-native resolution sources are connected to the projector

AutoSense™ automatically syncs with any computer signal and features one-touch image optimization

64-step image magnification with location control

Discreet source keys for source selection

Remote diagnostics enable the user to monitor and make adjustments to the projector remotely

Built-in HTTP page for control and monitoring over a LAN network. Email notification of error messages or lamp end-of-life can be sent to remote locations.

WARRANTY

Registered owners receive a five (5) years or 20,000 hours (whichever comes first) parts and labor warranty including the first year of InstaCare. InstaCare provides the original owner one year of either limited 3 business day repair/return or next business day exchange.

SHIPS WITH

Remote control, batteries, power cord, user's manual on CD-ROM, quick start guide, product registration card.

ACCESSORIES

SCP200	Suspended ceiling plate
PA600CM	Ceiling mount
NP05LM1	Wireless LAN Module
RMT-PJ35	Replacement remote control
PWRCRD-PJPX	Power cable
RGBCBL-PJPX	RGB cable
NP08CV	Safety Cover for Portrait Installation
X105-RF-X2	XPAND 3D RF Glasses
AD025-RF-X11	XPAND 3D RF Transmitter
ADVEXON1-I	Extends term of InstaCare service program to 2 years
ADVEXON2-I	Extends term of InstaCare service program to 3 year
DNSL	DisplayNote Site License

ORDERING MODEL NUMBERS

NP-P502WL-2
NP-P502HL-2

	P502WL-2	P502HL-2	
Display Technology	0.65" DMD		
Light Output (lumens)	5000 normal / Eco = variable		
Resolution	Native	WXGA 1280 x 800	
	Maximum	WUXGA 1920 x 1200	
Contrast Ratio (up to)	15,000:1 with auto iris		
Laser Life (up to)	20,000 hours		
Screen Size (diagonal)	30 to 300 in. / 0.76 to 7.62m		
Throw Ratio	1.3 - 2.2	1.24 - 2.1	
Projection Distance	2.6 to 46.6 ft. / 0.8 to 14.2m		
Projection Angle	12.6 to 12.9° tele / 21.0 to 21.9° wide		
Lens	Zoom	Manual	
	Zoom Ratio	1.7:1	
	Focus	Manual	
	F-number, f-number	F= 2.0, f= 18.2 to 31.1mm	
	Shift	Manual +0.59 vertical, +/-28 horizontal	Manual +0.62 vertical, +/-25 horizontal
Keystone Correction	+/- 25° horizontal, +/- 30° vertical		
Scan Rate	Horizontal	15 – 100 kHz	
	Vertical	50 – 120 Hz	
Supported Video Standards	NTSC, NTSC4.43, PAL, PAL-60, PAL-M, PAL-N, SECAM		
SD/HD Video Signal Compatibility	1080p, 1080i, 720p, 576p, 576i, 480p, 480i		
PC Signal Compatibility	VGA, SVGA, XGA, SXGA, SXGA+, UXGA, WUXGA		
Macintosh Compatibility	Yes		
Input/Output Terminals	RGB1 (analog)	15 pin, Component video using ADP-CV1E adapter	
	RGB2 (digital)	HDMI w/HDCP	
	RGB3 (digital)	HDMI w/HDCP	
	RGB4 (digital)	HDBaseT	
	Video	RCA	
	Audio 1	L/R RCA (shared by video sources)	
	Audio 2	1/8 in. stereo	
	Audio Out	mini stereo (Variable audio out)	
Monitor Out	15Pin D-sub		
3D Sync Line	3Pin D		
Audio	20W mono		
External Control	RS-232, IR, HDBaseT, DDC/CI, USB		
Sync Compatibility	Separate Sync / Composite Sync / Sync on G		
Power Requirements	100 – 240V AC, 50/60Hz		
Input Current	5.7A - 2.3A		
Power Consumption (ECO off/ECO Mode/Standby/Standby-Power Saving)	464W / 362W / 2.1W / 0.5W		
Installation Orientation	Floor/Front, Floor/Rear, Ceiling/Front, Ceiling/Rear		
Dimensions (WxDxH)	18.5 x 14.4 x 5.4 in. / 469 x 365 x 137mm		
Net Weight	19.4 lbs. / 8.8 kg		
Fan Noise	39 dB normal / 33 dB eco		
Regulations	USA: UL/UL60950-1, Laser + Lamp (IEC60825-1 Ed.3 + IEC62471-1/-5), FCC Part15 Class B Canada: CUL/UL60950-1, Laser + Lamp (IEC60825-1 Ed.3 + IEC62471-1/-5), ICES-003 Class B		
Operating Temperature	41° – 104°F / 5° – 40°C		
Humidity	20-80% non-condensing		
Storage	-14° – 122°F / -10° – 50°C		

Additional accessories are available, including screens, carts, mount accessories and replacement cables. Visit www.necdisplay.com for details.



3D Reform, Advanced AccuBlend, AutoSense and ECO Mode are trademarks of NEC Display Solutions. HDMI, the HDMI Logo and High-Definition Multimedia Interface are trademarks or registered trademarks of HDMI Licensing LLC. All other brand or product names are trademarks or registered trademarks of their respective holders. Product specifications subject to change.